

AFTER COMPLETION, DEALER SHOULD REMOVE AND RETAIN FOR RECORDS

**H&S
DEALER PRE-DELIVERY CHECK LIST**

After Hay Tedder has been completely set-up, check to be certain it is in correct running order before delivering to the customer. The following is a list of points to inspect. Check off each item as you have made the proper adjustments and found the item operating satisfactorily.

- PTO Shields slide freely.
- All Shields and Guards are in place and fastened.
- All grease fittings have been lubricated - See lubrication guide in this manual.
- All mechanisms are operating trouble free.
- Belts are properly adjusted.
- All bolts and fasteners are tight.
- All decals are in place, and legible.

Dealer's Name	Model No.	Serial No.
(Signature of Pre-Delivery Inspector)	Date of Inspection	

DEALER DELIVERY CHECK LIST

This check list that follows is an important reminder of valuable information that should be passed on to the customer at the time this Hay Tedder is delivered.

Check off each item as you explain it to the customer.

This pre-delivery check list, when properly filled out and signed assures the customer that the pre-delivery service was satisfactorily performed.

- Explain to the customer that pre-delivery inspection was made.
- Explain to the customer all the safety precautions they must exercise when operating this unit.
- Explain the adjustment for proper material fluffing.
- Explain to customer that regular lubrication is required for proper operation and long life of machine. Show customer the lubrication section of Owner's Manual.
- Give customer Owner's Manual and make sure he reads and understands all operating and service instructions.
- Enter Serial Number on Page 13 of this manual.
- Have customer sign a completed "Warranty Registration," and mail it promptly.

Date Delivered _____

Dealer's Name _____

By _____

Signature of Original Buyer

Note: Warranty is not valid until warranty card is completed and returned to H&S Mfg. Co., Inc.

Remove Dealers File Copy At Perforation





**BE
ALERT!** **YOUR SAFETY
IS INVOLVED.**

THIS SYMBOL IS USED THROUGHOUT THIS BOOK WHENEVER YOUR PERSONAL SAFETY IS INVOLVED. TAKE TIME TO BE CAREFUL. REMEMBER: THE CAREFUL OPERATOR IS THE BEST OPERATOR. MOST ACCIDENTS ARE CAUSED BY HUMAN ERROR. CERTAIN PRECAUTIONS MUST BE OBSERVED TO PREVENT THE POSSIBILITY OF INJURY OR DAMAGE.

TRACTORS

This operator's manual uses the term "Tractor" when identifying the power source for the Hay Tedder.

H&S MANUFACTURING CO., INC.

RECOGNIZE SAFETY INFORMATION

This is the safety-alert symbol. When you see this symbol on your machine or in this manual, be alert to the potential for personal injury.

Follow recommended precautions and safe operating practices.



UNDERSTAND SIGNAL WORDS

A signal word –DANGER, WARNING, or CAUTION– is used with the safety-alert symbol. DANGER identifies the most serious hazards.

Safety signs with signal word DANGER or WARNING are typically near specific hazards.

General precautions are listed on CAUTION safety signs.



FOLLOW SAFETY INSTRUCTIONS

Carefully read all safety messages in this manual, and all safety signs on your machine. Follow all recommended precautions and safe operating procedures.

Keep signs in good condition. Immediately replace any missing or damaged signs.

⚠ DANGER

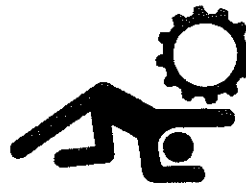


ROTATING DRIVELINE CONTACT CAN CAUSE DEATH KEEP AWAY!

DO NOT OPERATE WITHOUT-

- ALL DRIVELINE, TRACTOR AND EQUIPMENT SHIELDS IN PLACE.
- DRIVELINES SECURELY ATTACHED AT BOTH ENDS.
- DRIVELINE SHIELDS THAT TURN FREELY ON DRIVELINE.

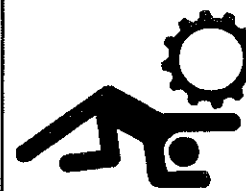
1494L



⚠ DANGER

STAY CLEAR OF REEL AND ALL ROTATING PARTS WHEN TRACTOR IS RUNNING OR PTO IS ENGAGED. FAILURE TO HEED MAY RESULT IN SERIOUS INJURY OR DEATH.

12494D



⚠ DANGER

DO NOT SHIFT LEVER WHEN TRACTOR IS RUNNING OR PTO IS ENGAGED. FAILURE TO HEED MAY RESULT IN SERIOUS INJURY OR DEATH.

12494E

⚠ WARNING



DO NOT CLEAN OR WORK ON THIS MACHINE WITHOUT FIRST DISENGAGING POWER AND SHUTTING OFF TRACTOR ENGINE.

1494J

⚠ WARNING



DO NOT REMOVE SHIELDS MOVING PARTS INSIDE

1494K

⚠ WARNING



DO NOT OPERATE THIS EQUIPMENT IF THIS DECAL IS EXPOSED. REPLACE SAFETY SHIELDS. FAILURE TO HEED MAY RESULT IN SERIOUS INJURY OR DEATH.

3894

⚠ WARNING

HELP AVOID INJURY

- READ & UNDERSTAND THE OPERATORS MANUAL PROVIDED WITH THIS MACHINE. IF MISPLACED CALL H & S MANUFACTURING AT 715-387-3414 WITH MODEL AND SERIAL NUMBER.
- UNDERSTAND ALL SAFETY WARNINGS AND FUNCTION OF CONTROLS.
- KEEP SAFETY DEVICES IN PLACE AND WORKING.
- KEEP YOURSELF AND OTHERS WELL CLEAR OF MOVING PARTS.
- DISCONNECT ALL POWER BEFORE SERVICING OR CLEANING THIS MACHINE.
- DO NOT EXCEED 20 MPH

72203A



⚠ WARNING

DO NOT REMOVE SHIELDS ROTATING PARTS INSIDE

12794

⚠ WARNING!



KEEP CHILDREN AWAY AT ALL TIMES!

2495

H&S HAY TEDDER



W A R N I N G

TO PREVENT SERIOUS INJURY OR DEATH

BEFORE YOU ATTEMPT TO OPERATE THIS EQUIPMENT, READ AND STUDY THE FOLLOWING INFORMATION. IN ADDITION, MAKE SURE THAT EVERY INDIVIDUAL WHO OPERATES OR WORKS WITH THIS EQUIPMENT, WHETHER FAMILY MEMBER OR EMPLOYEE, IS FAMILIAR WITH THESE SAFETY PRECAUTIONS.

KNOW HOW TO STOP MECHANISM BEFORE STARTING IT

If the machine becomes clogged, disengage the Power Take-off. Stop the tractor engine and allow all mechanisms to stop before cleaning or working on the machine.

DO NOT attempt to perform maintenance or repair with tractor running or PTO hooked up.

DO NOT step up on machine at any time.

NEVER manually feed material into the reel.

DO NOT allow minors to operate or be near the machine.

DO NOT ALLOW PERSONNEL OTHER THAN THE QUALIFIED OPERATOR NEAR THE MACHINE.

Before starting tractor, be sure PTO shields slide freely and PTO is securely locked to tractor.

DO NOT clean, adjust, or lubricate the machine when any part is in operation.

Keep hands, feet, and clothing away from REEL WHEN IT IS REVOLVING.

Loose or floppy clothing should not be worn by the operator.

Be sure the machine is clear of people, tools, and other objects before engaging PTO.

NEVER start Hay Tedder until all guards and safety shields are secured in place.

DO NOT adjust reel when machine is running.

DO NOT adjust ground height with the tractor running.

NEVER hook up 1000 RPM tractor to the Hay Tedder.

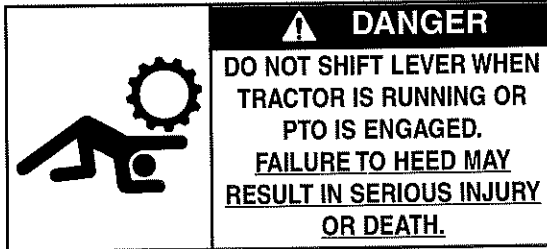
H&S Mfg. Co. always takes the operator and his safety into consideration and guards exposed moving parts for his protection. However, some areas cannot be guarded or shielded in order to assure proper operation. In addition, the operator's manual and decals on the machine itself warn you of further danger and should be read and observed closely.

Study the Above Safety Rules

ATTENTION-BE ALERT-YOUR SAFETY IS INVOLVED

FIELD OPERATION

Your H&S Tedder delivers outstanding ground speed and yet gently fluffs up the hay. The height of hay pitching can be regulated by moving the adjustment lever (eight different settings), located on the left hand side of the Tedder.



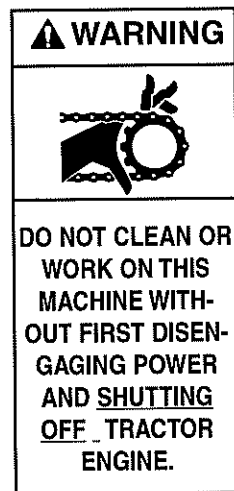
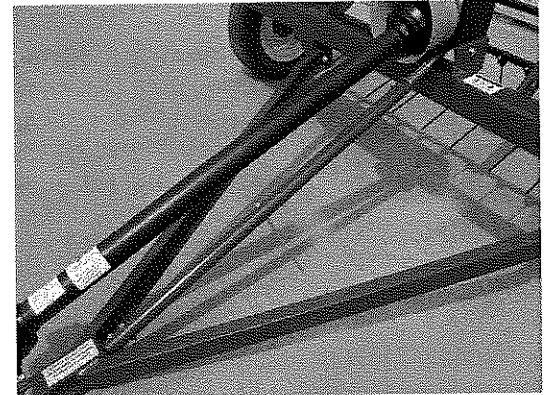
Adjustment Lever



While using your H&S Tedder, which is capable of tedding quickly and efficiently, you might want to change the adjustment lever to make it more efficient. As various conditions will effect the efficiency of your Tedder, only with experience will you know how to properly adjust the Tedder. Field conditions, weather conditions, and type and size of windrow or swath are some of the determining factors for proper teeth adjustment, height adjustment, and PTO and ground speed to make your Tedder most efficient in gently picking up and fluffing all the hay.

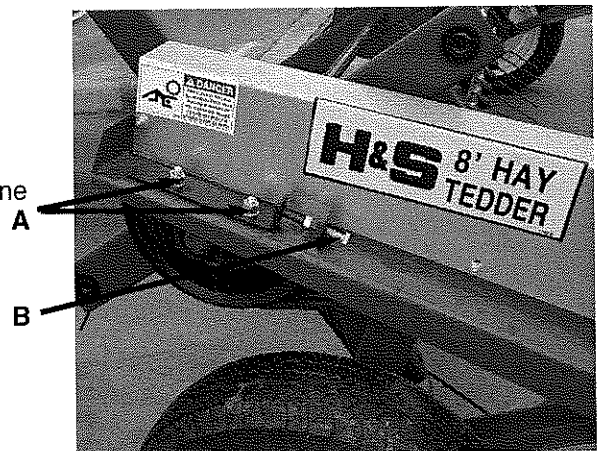
HEIGHT ADJUSTMENT

Located between hitch and gearbox mount is the height adjustment rod. This adjustment controls the height of the reel in relation to the ground. Shortening adjustment rod will raise reel, while lengthening it will lower it. A convenient handle is provided to turn adjustment rod.



ADJUSTMENTS

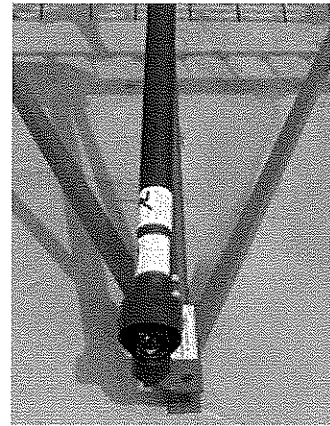
1. The V-Belts absorb shock and prevent damage to the machine should the reel strike an obstruction. Adjust the belts by loosening the two bearing mounting bolts (A) on each end of the reel. Turn the adjusting bolts (B) on each side of the Tedder equally so the reel runs parallel with the frame. Adjust the belt to about 1/2 inch deflection. Then secure the reel bearing bolts tightly to the frame.
2. To adjust the wheel hubs, tighten the castellated nut on the spindle to the point where there is no end play and a slight drag on the bearing.



FIELD OPERATION (Continued)

PTO HOLDER

A convenient bracket is provided to hold PTO when Tedder is not in operation. Locking PTO onto holder will also prevent reel from turning during road travel.



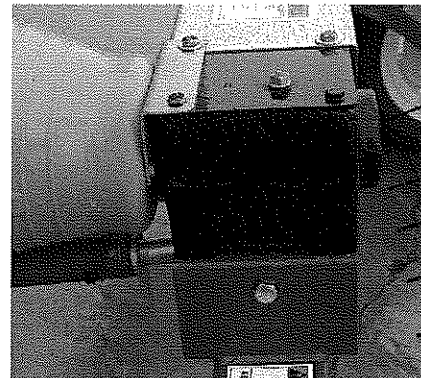
LUBRICATION

The operator should become familiar with all lubrication points, and establish a systematic routine to insure complete and quick lubrication of the machine. Life expectancy of this or any other machine is dependent on regular maintenance including lubrication, and bolt torque

GEAR BOX

Before using your new machine, check the oil in the gear box, keep filled to the center of the shafts. Use 80W-90W gear lube.

Both wheel axle bearings have been packed with grease at the factory. However, they should be checked periodically to insure proper operation.



⚠ WARNING



DO NOT CLEAN OR WORK ON THIS MACHINE WITHOUT FIRST DISENGAGING POWER AND SHUTTING OFF TRACTOR ENGINE.

PTO ASSEMBLY

Care must be taken to keep the male and female driving elements well lubricated and free sliding. Failure to observe this precaution will result in excessive pressure being required to collapse and extend the assembly while subject to operating torque. This excessive force may damage the PTO assembly. **DO NOT** lubricate the shield surfaces, the shields must be kept dry, as dirt accumulation on them will cause these units to bind and not slide.

GREASE FITTINGS

There are 33 grease fittings on this machine. If these are lubricated properly and often enough it will prolong the life of the Tedder. Grease daily during normal use, and before and after storage. Use a good grade of high quality grease, make certain that the grease fittings are free of paint and dirt. Grease them until grease comes out around the shaft on the sleeve type bearings. On the sealed ball bearings, grease should be added slowly until a slight bead forms at the seals indicating the correct amount of lubricant. Wipe off the excess grease to prevent the accumulation of chaff and grit around the bearings.

LOCATION OF GREASE FITTINGS (Illustrated on opposite page)

- A. (2) One at each end of PTO at U-joint
- C. One on hitch adjustment rod
- D. One on front jack shaft (sealed bearing)
- E. (2) One at each end of reel main shaft (sealed bearing)
- F. (12) One at end of each arm of each reel cross
- G. (12) Three on each set of cam arms
- H. One on cam center bearing

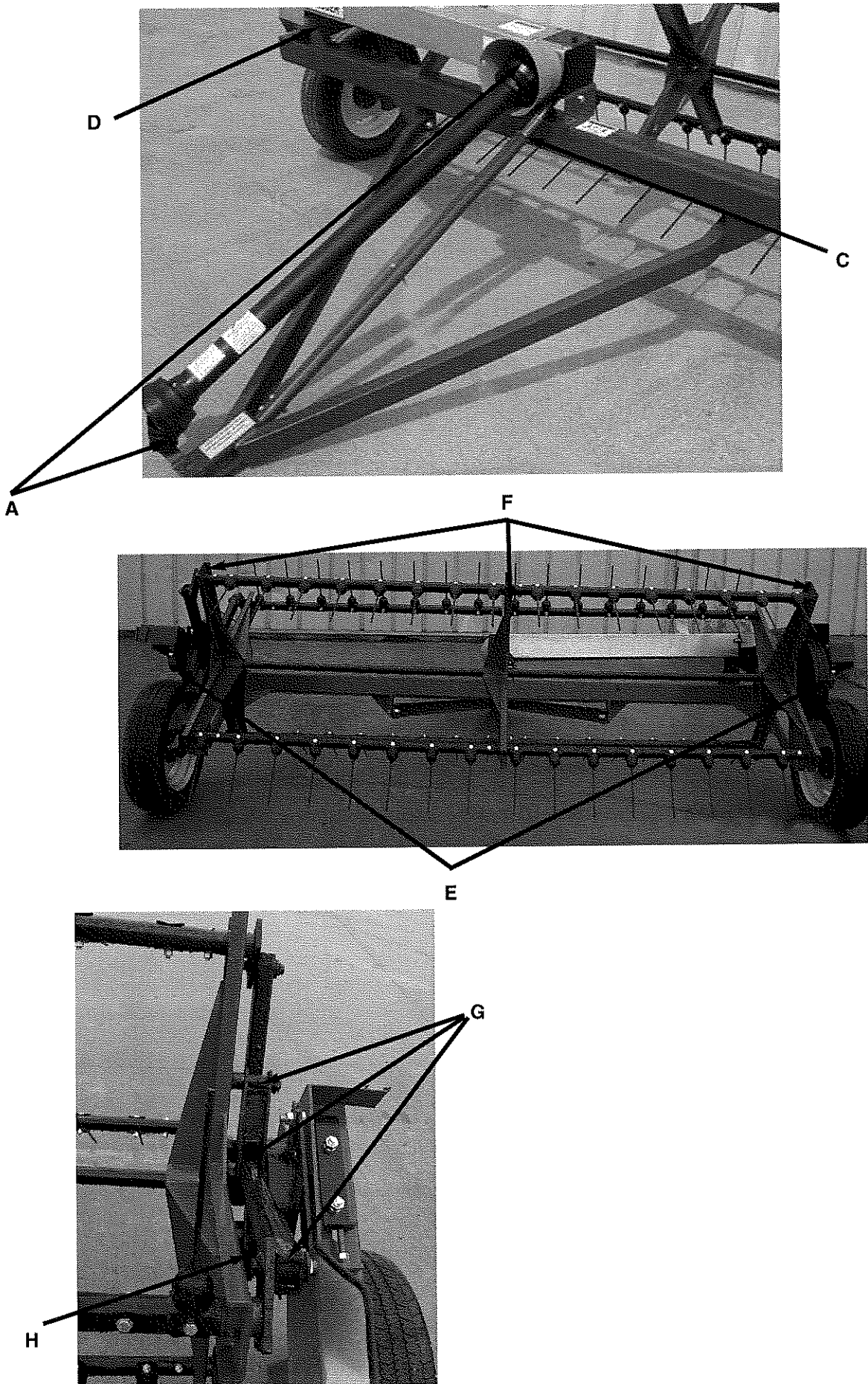
⚠ DANGER



ROTATING DRIVELINE CONTACT CAN CAUSE DEATH KEEP AWAY!

- DO NOT OPERATE WITHOUT-
- ALL DRIVELINE, TRACTOR AND EQUIPMENT SHIELDS IN PLACE.
- DRIVELINES SECURELY ATTACHED AT BOTH ENDS.
- DRIVELINE SHIELDS THAT TURN FREELY ON DRIVELINE.

GREASE FITTING LOCATION



DECAL LOCATION

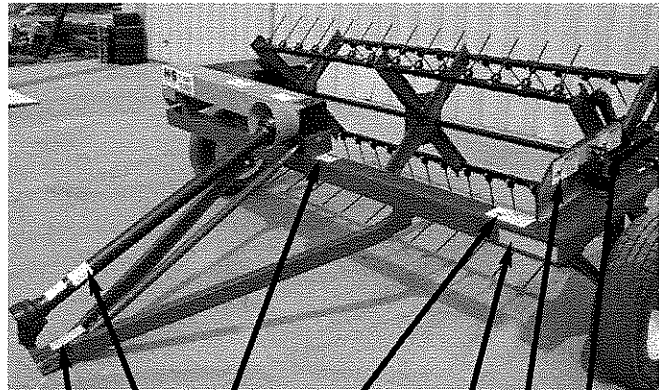
Your H&S Hay Tedder was manufactured with operator safety in mind. Located on the Hay Tedder are various decals to aid in operation, and warn of danger or caution areas. Pay close attention to all the decals on your Hay Tedder.



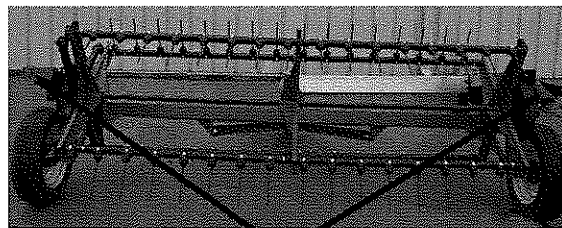
DO NOT REMOVE ANY OF THESE DECALS. IF DECALS ARE LOST, DAMAGED, OR IF HAY TEDDER IS REPAINTED, REPLACE DECALS. REMEMBER: DECALS ARE FOR YOUR PROTECTION AND INFORMATION.

Listed below are the decals on your Hay Tedder. These decals may be ordered individually by part number or by ordering a complete set.

ITEM	PART NO.	DESCRIPTION
A	12494D	(4) DANGER-Stay Clear of Reel
B	1787C	(2) 7' Hay Tedder
	1787D	(2) 8' Hay Tedder
C	1494K	Warning-Do Not Remove Shields
D	72203A	Warning-Help Avoid Injuries
E	12794	Warning-Do Not Remove Shields
F		Serial Number
G	1787G	PTO Holder
H		WEASLERDANGER-PTO (H&S Decal 1494L)
I	1494J	Warning-Do Not Clean
J		Amber Reflector
K	12494E	DANGER-Do Not Shift Lever
L		(2) Red Reflector
M	3894	Warning-Do Not Operate
N	2495	Warning-Keep Children Away
	11604-7	Complete Set of Decals-7' Tedder
	11604-8	Complete Set of Decals-8' Tedder
Paint - H&S Red		
	ZX21	Gallon
	ZX22	Quart
	ZX23	Pint



A B I C B A D F E G H N A J K A



M
(Located Behind Shield)

L

Instructions for Ordering Parts

All service parts should be ordered through your H&S dealer. He will be able to give you faster service if you will provide him with the following:

1. Model of Tedder
Serial number -
2. All references to left or right, apply to the machine as viewed from rear.
3. Parts should not be ordered from the illustration only. Use complete parts number and description, as shown in the parts lists.
4. If the dealer has to order the part - give the shipping instructions.
VIA truck - large pieces (Specify local delivery truck line)
VIA United Parcel Service

H&S MFG. CO. INC.	
MARSHFIELD, WIS.	
MOD. NO.	<input type="text"/>
SER. NO.	<input type="text"/>
DESCR.	<input type="text"/>

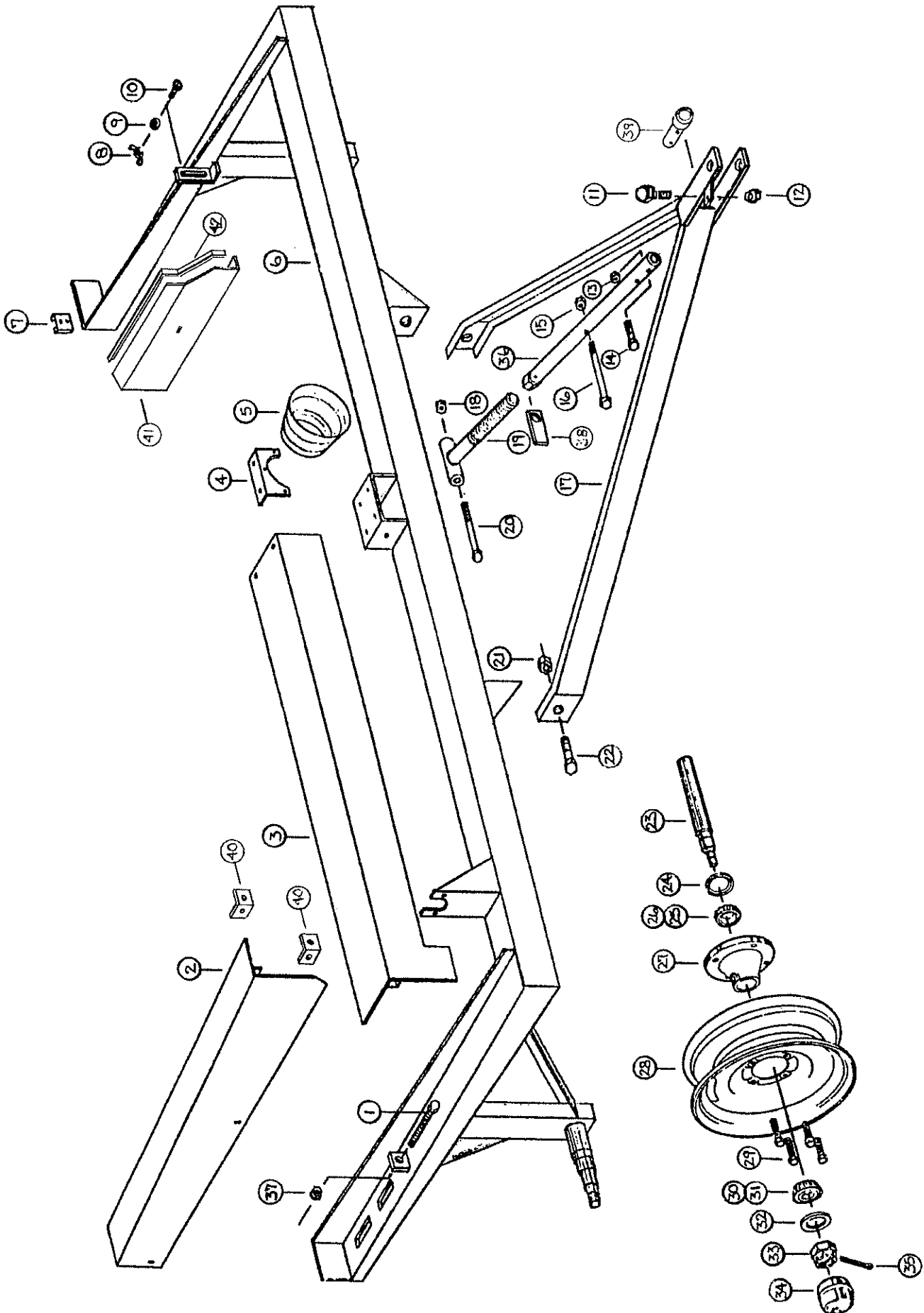
Record numbers in spaces provided above from the Serial Number tag off machine, as a handy record for quick reference.

ABOUT IMPROVEMENTS

H&S is continually striving to improve its products.

We must therefore, reserve the right to make improvements or changes when it becomes practical to do so, without incurring any obligation to make changes or additions to the equipment previously sold.

FIGURE 1



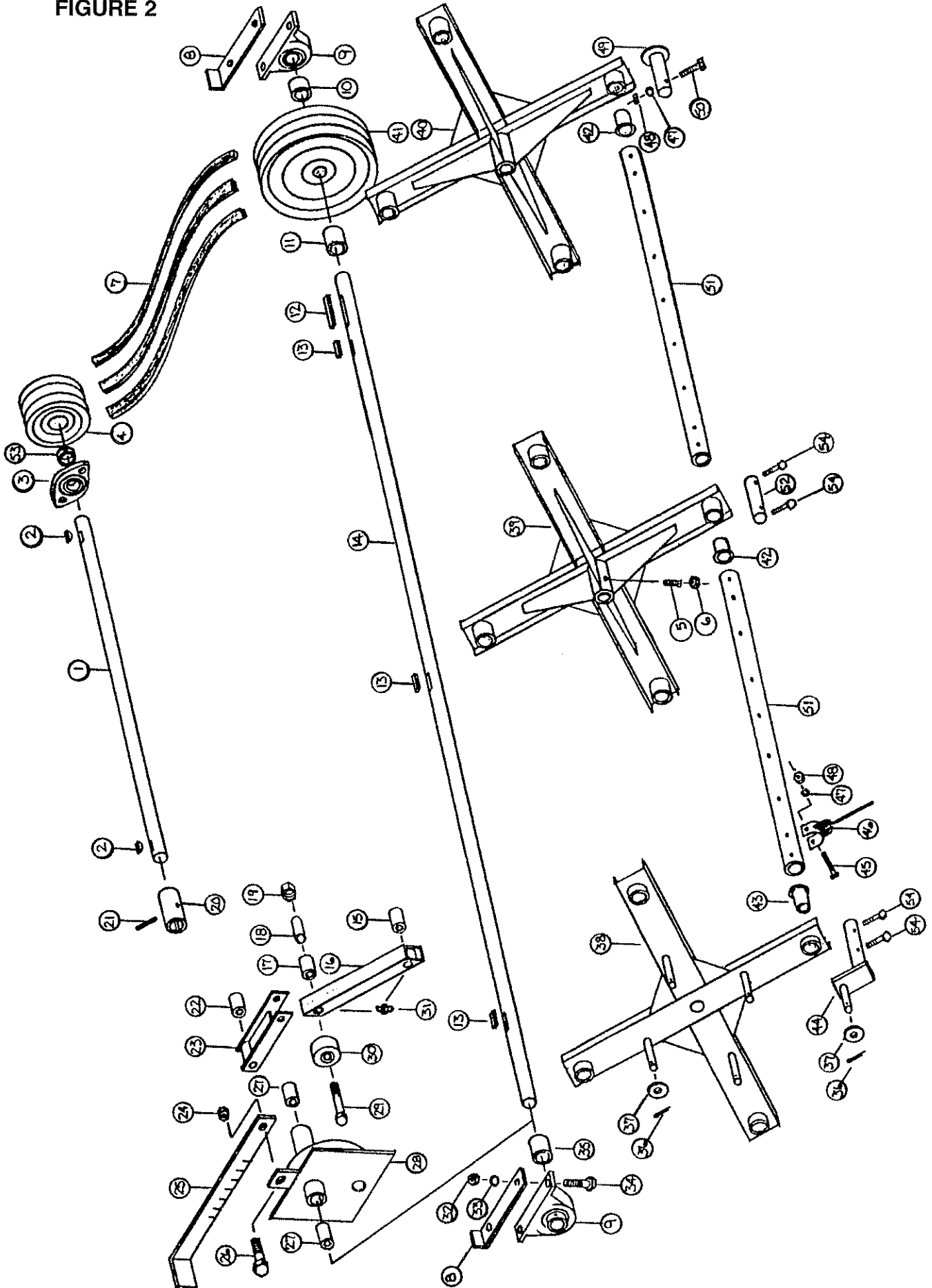
**FIGURE 1
FRAME & SHIELDS**

ITEM	8'	7'	DESCRIPTION
1.	9S16	"	Tightener Bolt 1/2"x4-1/2"
2.	T10	"	Side Shield
3.	T11	T711	Front Shield
4.	T12	"	Gear Box Shield
5.	T13	"	Gear Box Plastic Shield
6.	T14	T714	Tedder Main Frame
7.	F97	"	SMV Holder
8.	T15	"	Wing Nut
9.	T16	"	1/4" Flat Washer
10.	T17	"	Carriage Bolt 1/4"x3/3"
11.	T18	"	PTO Holder
12.	R11	"	1/2" Lock Nut
13.	A14	"	3/8" Lock Nut
14.	T114	"	3/8" x 2" Bolt Grade 5
15.	A14	"	3/8" Lock Nut
16.	T20	"	3/8" x 6" Bolt
17.	T21	"	Pole for Tedder
18.	R29	"	1/2" Nut
19.	T22	"	Adjustment Screw
20.	X99	"	1/2"x6-1/2" Bolt
21.	T23	"	3/4" Lock Nut
22.	T24	"	3/4"x2" Bolt
23.	T25	"	Spindle
24.	T26	"	Seal CR-14975
25.	T27	"	Bearing LM67048
26.	T28	"	Race LM67010
27.	T29	"	Hub
28.	T30	"	Rim
29.	T31	"	Hub Bolt
30.	T32	"	Bearing LM11949
31.	T33	"	Race LM11910
32.	T34	"	Washer
33.	T35	"	Nut
34.	T36	"	Hub Cap
35.	T37	"	Cotter Pin
36.	T117	"	Adjustment Pipe
37.	R29	"	1/2" Nut
38.	T118	"	Adjustment Lock
39.	T119	"	Adjustment End Shaft
40.	T120	"	Shield Angle
41.	T121	"	LH Side Shield
42.	T124	"	Plastic Edge For Shield

NOTE: " (Same Part No. As 8' Model)

H.S.

FIGURE 2



**FIGURE 2
CAM AND BELT DRIVE ASSEMBLY**

ITEM	8'	7'	DESCRIPTION
1.	T39	T739	Front Shaft
2.	5B10	"	1/4" x 1" Woodruff Key
3.	T40	"	Bearing
4.	T260	"	Pulley
5.	T115	"	Set Screw for Reel
6.	T116	"	5/16" Nut
7.	T44	"	V-Belt
8.	T45	"	Tightener Brackets
9.	T46	"	Bearing
10.	T47	"	Spacer 1-3/8"
11.	T48	"	Spacer 2-5/8"
12.	T49	"	5/16" x 4" Sq. Key
13.	T50	"	5/16" x 2" Sq. Key
14.	T51	T751	Reel Shaft
15.	T52	"	Bronze Bushing 3/4" I.D. (8)
16.	T53	"	Cam Long Arm
17.	T52	"	Bronze Bushing 3/4" I.D. (8)
18.	T122	"	Steel Bushing 5/8" I.D. (4)
19.	T60	"	5/8" Lock Nut
20.	T57	"	Gear Box Connector
21.	3G22	"	Roll Pin 5/16" x 1-3/4"
22.	T58	"	Bronze Bushing 3/4" I.D. (4)
23.	T59	"	Cam Short Arm
24.	T60	"	5/8" Lock Nut
25.	T61	"	Cam Handle
26.	T62	"	5/8" x 1-1/2" Bolt
27.	T63	"	Bronze Bushing 1-3/8" I.D. (2)
28.	T64	"	Cam Assembly
29.	T65	"	5/8" x 4 Bolt
30.	T66	"	Cam Roller Bearing
31.	T67	"	Grease Zerk (long)
32.	T68	"	5/8" Nut
33.	T69	"	5/8" Lock Washer
34.	T70	"	5/8" x 2 Bolt
35.	T71	"	Spacer 1"
36.	T72	"	Cotter Pin 5/32 x 1-1/2
37.	T73	"	Washer
38.	T74	"	LH Reel Cross
39.	T75	"	Center Reel Cross
40.	T76	"	RH Reel Cross
41.	T77	"	Pulley
42.	T78	"	Bronze Bushing 1-1/4" I.D. (8)
43.	T79	"	Bronze Bushing 1-1/4" I.D. (4)
44.	T80	"	LH Stub Shaft
45.	T123	"	3/8" x 2-1/4" Bolt Grade 5
46.	T82	"	Rubber Mounted Teeth
47.	B68	"	3/8" Lock Washer
48.	K60	"	3/8" Nut
49.	T83	"	RH Stub Shaft
50.	T19	"	3/8" x 2 Bolt Grade 5
51.	T84-8	T784-8	Reel Pipe
*	T84-9	T784-9	Reel Pipe
52.	T85	"	Center Stub Shaft
53.	4C9	"	Lock Collar
54.	T123	"	3/8" x 2-1/4" Bolt Grade 5 (Thru Teeth)
	T114	"	3/8" x 2" Bolt Grade 5 (Thru pipe)

NOTE: " (Same Part No. As 8' Model)

HES HAND

FIGURE 3

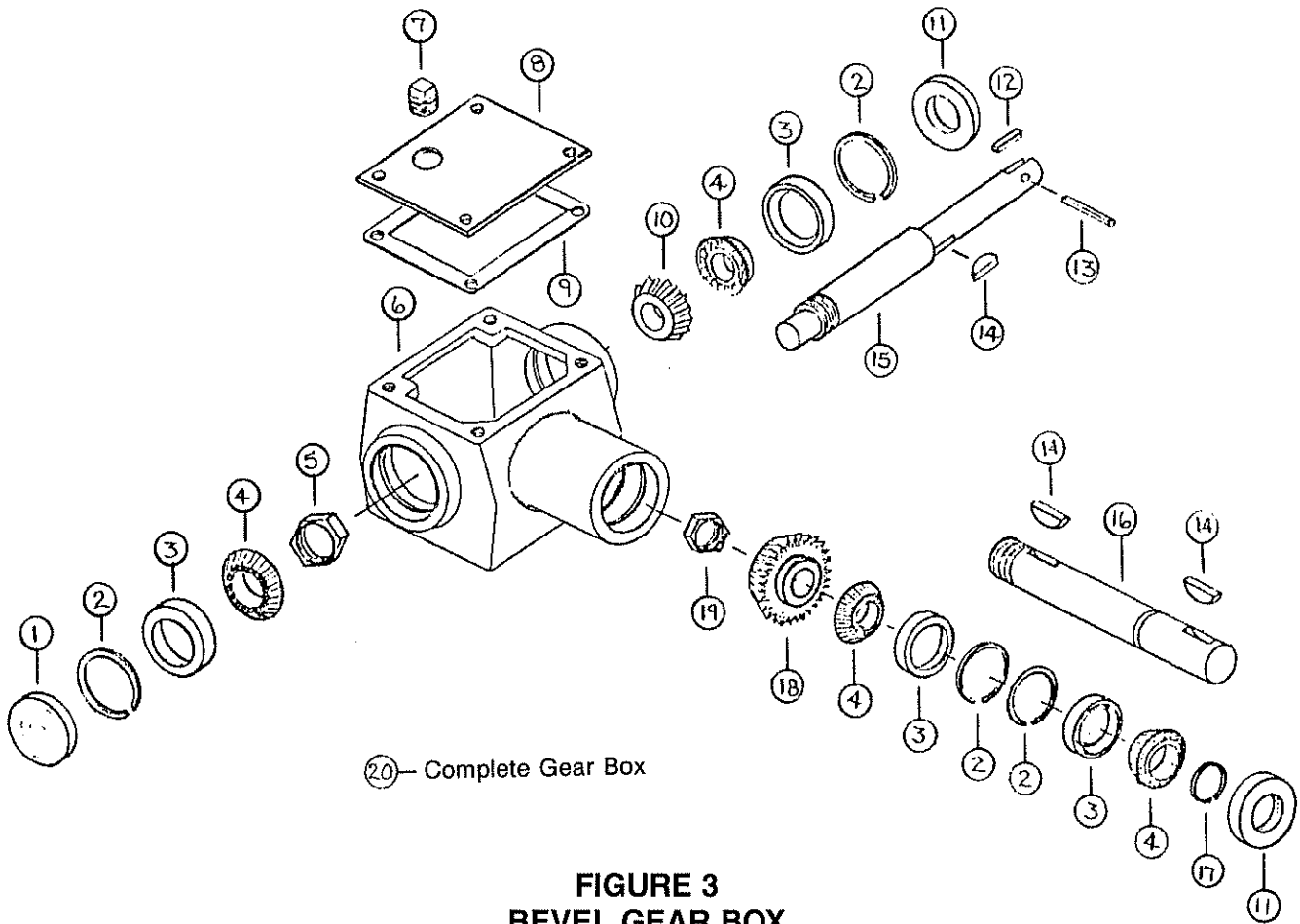


FIGURE 3
BEVEL GEAR BOX

MODEL & PART NO.

ITEM	8'	7'	DESCRIPTION
1.	X2	"	Dust Cap
2.	3G10	"	Snap Ring
3.	3G18	"	Race #15245
4.	3G7	"	Bearing #15101
5.	3G11	"	Nut
6.	3G1	"	Housing
7.	3G20	"	Plug
8.	3G3	"	Cover
9.	3G2	"	Gasket
10.	X3G5	"	Gear 12T
11.	3G9	"	Seal
12.	S135	"	1/4x1-1/4 Square Key
13.	3G22	"	5/16x1-3/4 Roll Pin
14.	5B10	"	1/4x1 Woodruff Key
15.	T86	"	Gear Box Front Shaft
16.	T87	"	Gear Box Side Shaft
17.	3G21	"	Snap Ring
18.	X36	"	Gear 18T
19.	3G4	"	Nut
20.	T112	"	Complete Gear Box

NOTE: " (Same Part No. As 8' Model)

FIGURE 4
H&S HAY TEDDER PTO
(2005 Model Year Only)

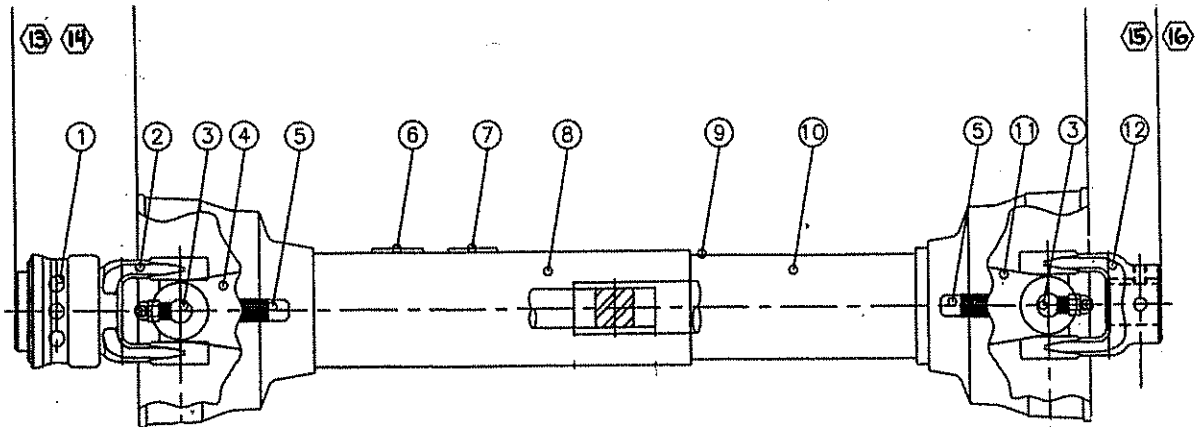


FIGURE 4

ITEM	PART NO.	DESCRIPTION
1.	S225	Spring-Lok Repair Kit
2.	S224	Spring-Lok Yoke Assembly
3.	W-Kit	"W" Cross & Bearing Kit
4.	T266	Yoke & Shaft
5.	T267	Guard Repair Kit (Not Shown)
6.	16SV283	Safety Sign
7.	16SV384	Safety Sign-540 RPM
8.	T268	Outer Guard
9.	T269	Inner Guard
10.	16SV388	Safety Sign (Not Shown)
11.	T270	Yoke & Tube
12.	T271	Yoke
13.	T262	Joint & Shaft Half Assembly w/Guard
14.	T263	Joint & Shaft Half Assembly
15.	T264	Joint & Tube Half Assembly w/Guard
16.	T265	Joint & Tube Half Assembly
17.	T272	Complete PTO

FIGURE 5
H&S HAY TEDDER PTO
(2006 Model Year and After)

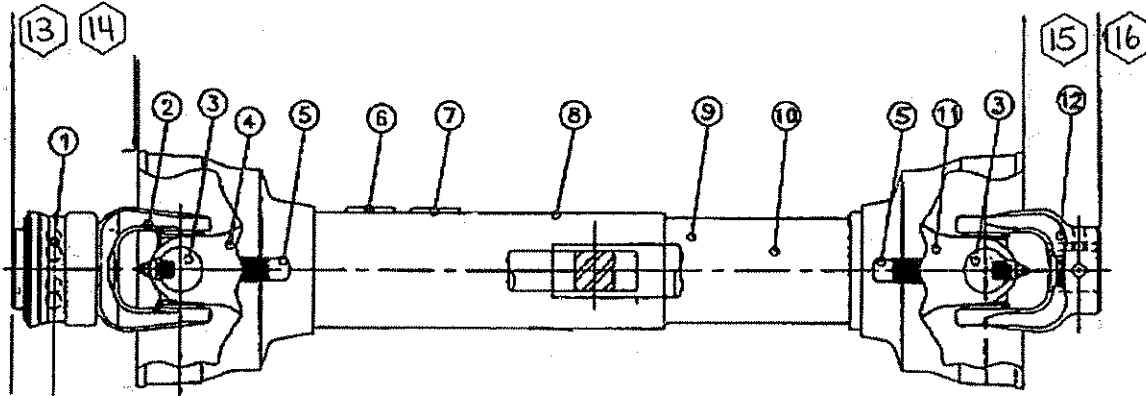


FIGURE 5

ITEM	PART NO.	DESCRIPTION
1.	S225	Spring-Lok Repair Kit
2.	S379	Spring-Lok Yoke Assembly
3.	T274	12P Cross & Bearing Kit
4.	T275	Yoke & Shaft
5.	S206	Guard Repair Kit (Not Shown)
6.	16SV283	Safety Sign
7.	16SV384	Safety Sign (540 RPM)
8.	T276	Outer Guard
9.	T277	Inner Guard
10.	16SV388	Safety Sign (Not Shown)
11.	T278	Yoke & Tube
12.	T279	Yoke
13.	T280	Joint & Shaft Half Assembly w/Guard
14.	T281	Joint & Shaft Half Assembly
15.	T282	Joint & Tube Half Assembly w/Guard
16.	T283	Joint & Tube Half Assembly
17.	T273	PTO Assembly Complete